

**2011**

**TOUR DE 'TOONA**



**POINTS RACE AND INDIVIDUAL  
TECHNICAL MANUAL**

**JULY 9 and JULY 10, 2011**

**USAC Permit 2011-1986**

# The 2011 TOUR de 'TOONA

## Table of Contents

### General Information

From the Promoter and Director	3
Race Personnel and Committee Staff	4
Race Sponsor	5
Race Schedule, Events, and Activities	6
Map of Altoona	7

### Technical Regulations

General Race Information	8
Circuit and Road Races	8
Feeding	9
Criterium	9
Race Week Office and Communication	9
Placement of Numbers	10

### Race Days

Day 1 –Altoona / Blair County Road Race	11
Road Race Courses	
Route Description	
Day 2 –Altoona Criterium	16
Criterium Map	

### Hospital Information 18

### Prize Breakdown 18

Prize Payment Procedure	
Men & Women Category Prize Breakdowns	

### Prize List 19



**Welcome to  
The 2011 TOUR DE 'TOONA  
*America's Premier Stage Race***

Welcome to the 25<sup>th</sup> Anniversary of America's premier stage race for men and women in the United States!

The Tour de 'Toona is proud that the hard work and dedication of thousands of volunteers, businesses, donors, and individuals over the last two decades has been rewarded by 25 years of success.

The Tour de 'Toona offers a unique and uniquely challenging cycling experience to participants as it showcases the region to the nation and the world. Racing the Tour de 'Toona has become a badge of honor, a rite of passage amongst pro and amateur cyclists.

What is especially endearing is the Tour is embraced by the surrounding communities, and welcomes America's best cyclists to the beautiful, rolling countryside of central Pennsylvania.

Race week offers a host of fun activities for spectators: Live music, food & drinks, and much more add to the unique experience of race week. Plus, spectators get the inimitable opportunity to meet some of the finest athletes in the world, up close and personal.

This technical manual offers specific information about the race and should be studied by teams and riders.

Whether you are a participant, a team member, or a spectator, enjoy your stay at this year's Tour de 'Toona.

Sincerely yours,

Richard A. (Rick) Geist  
Chairman & Promoter

Lawrence J. (Larry) Bilotto  
ABC President & Race Director

301 Union Avenue, PMB 324, Altoona, Pa 16602

## **2011 TDT COMMITTEE STAFF**

Promoter -	Rick Geist	Race Director -	Larry Bilotto
Program Director -	Pam Snyder-Etters	Asst. Race Director -	Bill Lewis
Press/Media -	Bob Leverknight	Race Command -	Frank Shields
Drug Control -	Theresa Lewis	Technical Advisor -	Mark Dysart
Host Housing -	Jody Kurtz	Start / Finish Set-up -	Chris Yingling
Registration -	Joan Bilotto	Asst. Start / Finish -	John Logan
Racer Relations -	Dawn Nale	Stage / Sound -	Jeff Fochler
Riders Services -	Nora Kunstbeck	Road Closure -	Denny Zeiss
Special Events -	Jennifer Daniels	Road Marshals -	Sandy Jablonski
Sponsor Awards -	Vicki Miller	Course Signage -	John King
VIP Services -	Beth Wiesinger	Caravan -	Skip Trostle
Race Secretary -	Nichole Barry	Motor Marshal -	Mark Dysart
Race Treasurer -		Communication -	Tamara Mazzetti

### **RACE SUPPORT**

Cellular Phone -	Cingular
Sound System -	Lightner Electronics
Traffic Signs -	Protection Service Inc.
Vehicle Detours -	EADS Group
Broom Wagon -	Amtran
Bike Shop Support -	Pedal Power

### **ALTOONA BICYCLE CLUB OFFICERS**

ABC President -	Larry Bilotto
Vice President -	Bill Lewis
Secretary -	Nichole Barry
Treasurer -	Karl King

### **USAC RACE OFFICIALS**

#### **Points & Individual Race**

Chief Referee – Jack Poplar  
Chief Judge – Kellie Prodanas

### **PROFESSIONAL TECHNICAL SUPPORT**

#### **Timing / Photo Finish**

Al MacDonald  
AGR Technology  
1050 Holly Street  
Denver CO 80220  
(303) 888-9735

#### **Neutral Support**

Butch Balzano  
**SRAM**, Neutral Support  
754 Branch Avenue  
Providence, RI 02904  
(401) 751-5712

#### **Announcing**

Joe Saling  
Sports Announcing  
44 North Avenue  
Bridgewater, NJ 08807  
(908) 725-3146

**Web site: [www.tourdetoona.com](http://www.tourdetoona.com)**

# The 2011 TOUR de 'TOONA

## Sponsor List \*

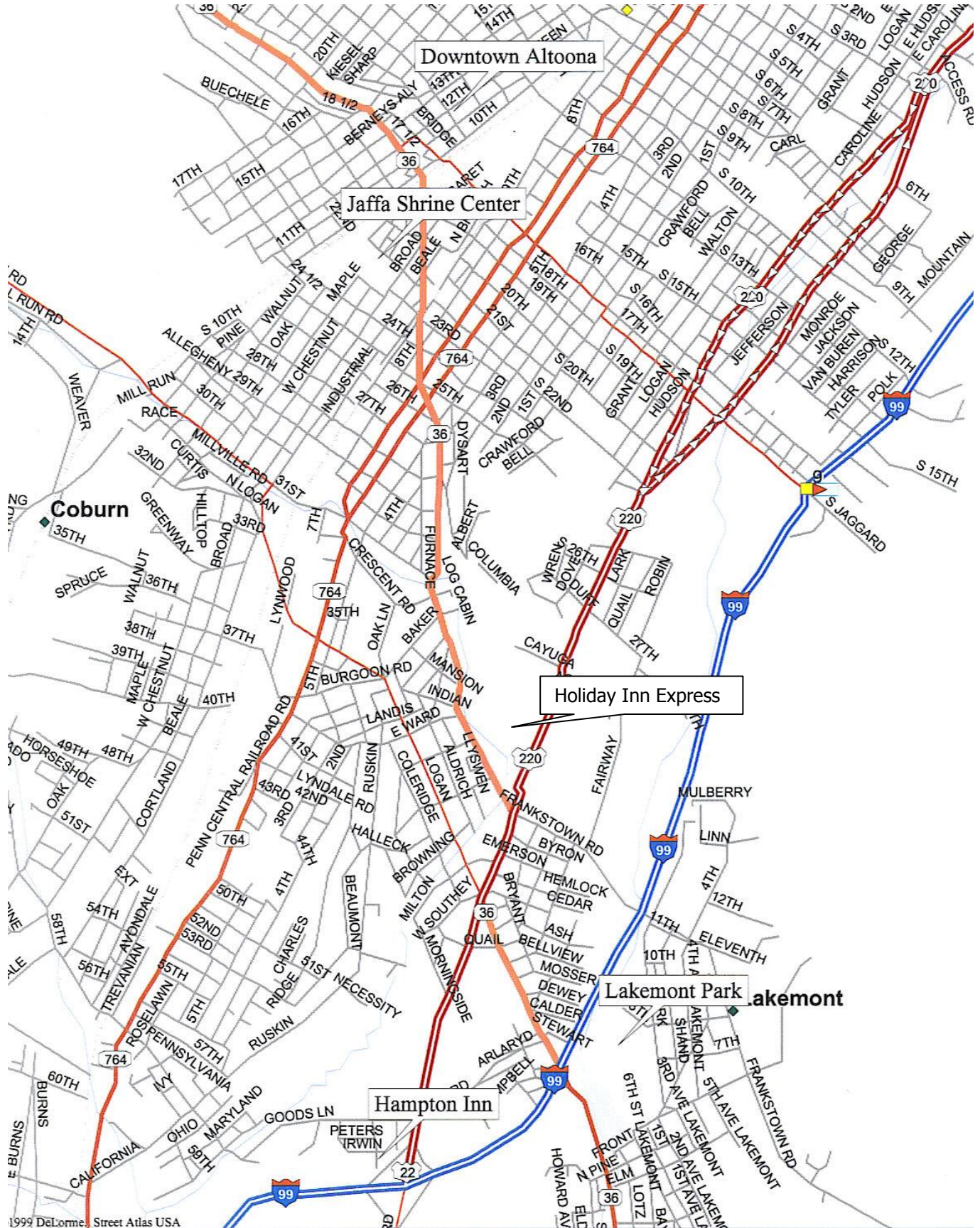
ABCD Corporation	Delta Development	PBS Coals Inc.
Allegheny Mountain Convention Center and Visitors Bureau	Exelon/PECO Corporation	Pedal Power
Altoona Firefighters	First Commonwealth Bank	Peoples Natural Gas
Altoona Ophthalmology Assoc.	Galliker's Dairy <b>QOM/KOM Stage 2</b>	Pennsylvania Coal Association
Altoona Police Department	GAMESA Energy	Pyramid Healthcare
AMED	Golden Living Center	Raphael's Restaurant
American Eagle Printing	Hampton Inn of Altoona	Richland Township
Aqua America	Hershey Foods Corp.	R.L. Polk
Atlantic Broadband <b>Stage 4</b>	Hertz	Roaring Spring Water
Bella Catering	Highmark Blue Cross Blue Shield	Root Sports <b>Stage 4</b>
Benzel's Pretzels	Holiday Inn Express	Roscommon Intl.
Blair Candy	Imler's Poultry	Sam's Club
Blue Knob All Season Resort	Jaffa Shrine	Sheetz
Blue Knob Auto	Lamar Signs Inc.	Spokes – n – Skis
Cambria County Visitors Bureau	Lightner Electronics	Steve Seltzer Honda
Canadian National Railway Co.	Lingenfelter Awnings	Stuckey Ford
Canadian Pacific Railway Co.	Link Logistics	Stuckey Subaru
Chesapeake Watershed	Lowes	Talisman
Comcast	Mark Pasquarilla	TransCore
Concurrent Technologies	Martin Foods	U.S. Steel
CSX	McAneny Brothers	Verizon
Dairyspot	Mid-Atlantic Dairy Accociation <b>QOM/ KOM Stage 2</b>	Waste Management
Dale Oxygen	Parson's Inc. <b>Best Young Rider</b>	White Deer Run
DelGrosso Foods	PBS and J	

*\* Due to the necessity of printing this program well before the race, we regret the omission of any sponsors whose names do not appear here.*

*The International - Tour de 'Toona wishes to thank all of our sponsors and urges readers to patronize the*



# CITY OF ALTOONA



## TECHNICAL REGULATIONS

1. All technical details will be in accordance with 2011 Rule Book for United States Cycling Federation.
2. Medical testing will be performed by the USOC and will be performed in accordance with the 2011 Rule Book for the USCF. Riders' numbers will be posted at the start/finish line.
3. The first three finishers in all categories in the Blair County Road Race, and the Criterium, as well as GC leaders; must be available immediately following their event for the award presentation. Riders that do not comply will be penalized in accordance with USCF rule (4H16).

### GENERAL

1. The INTERNATIONAL - TOUR de 'TOONA is organized by the Altoona Bicycle Club under the rules of the United States Cycling Federation.
2. This Competition Manual is a guideline highlighting special technical regulations and promotional considerations. All USCF rules will apply.
3. Senior Men 2, Senior Men 3, Senior Men 4, Senior Women 3, Senior Women 4 will be competing in three daily events. Each event will have a separate prize list. Points will also be awarded for an overall points GC (see prize list). You do not need to compete in every event to be eligible for daily event prizes; however you will forfeit any opportunity for GC prizes. There are 2 single day race events for the Men 5.
4. Race Leader's Jersey will be presented to the rider with the highest point total. You will be required to wear this jersey, which is provided by the promoter, into the next stage.
5. All race numbers must be worn throughout all days of racing. See diagram, page 8, for proper number placement.
6. All races will be conducted regardless of the weather conditions, unless the officials and race promoters agree to modify and / or cancel an event or day due to extraordinary conditions.
7. Each race will be lead by State or local police and supported by other vehicles; regardless, you still must follow the "**Yellow Line Rule**". In addition, should you fall outside the race caravan; you are to follow the legal rules of the road unless directed by police.
8. All races will start promptly as scheduled; except the Criterium, whose times are approximate.

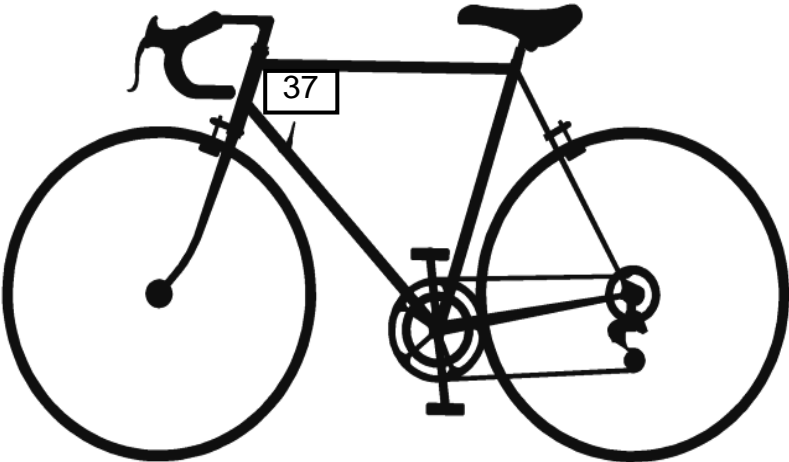
### ROAD RACES

1. Neutral technical support will be provided by SRAM, Neutral Support for all categories at the Criterium. Road Race & Circuit Race will utilize wheel vans. All wheels must be in good repair and property labeled with rider's number. Note: you may not receive your wheels during the race, due to reducing participants' down time.
  - a. The International-Tour de 'Toona Race and the Altoona Bicycle Club are not responsible for lost or stolen wheels. **You must have your jersey number to pick up dropped wheels.**
2. Any wheels received must be returned to neutral support van immediately following the race. Wheels may also be reclaimed at this time.
3. For service, riders must drop back to the neutral support vehicles. Vehicles may not come forward to service rider.
4. To service a rider, the support car and rider must stop at the extreme right side of the road. Vehicles will provide service from behind the rider, protecting the rider and mechanic from traffic.

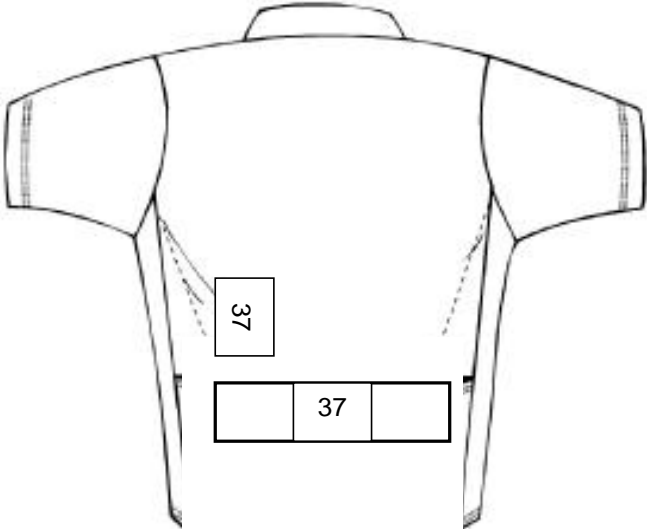


**RIDER'S NUMBER PLACEMENT:**

**FRAME**



**JERSEY NUMBERS:**



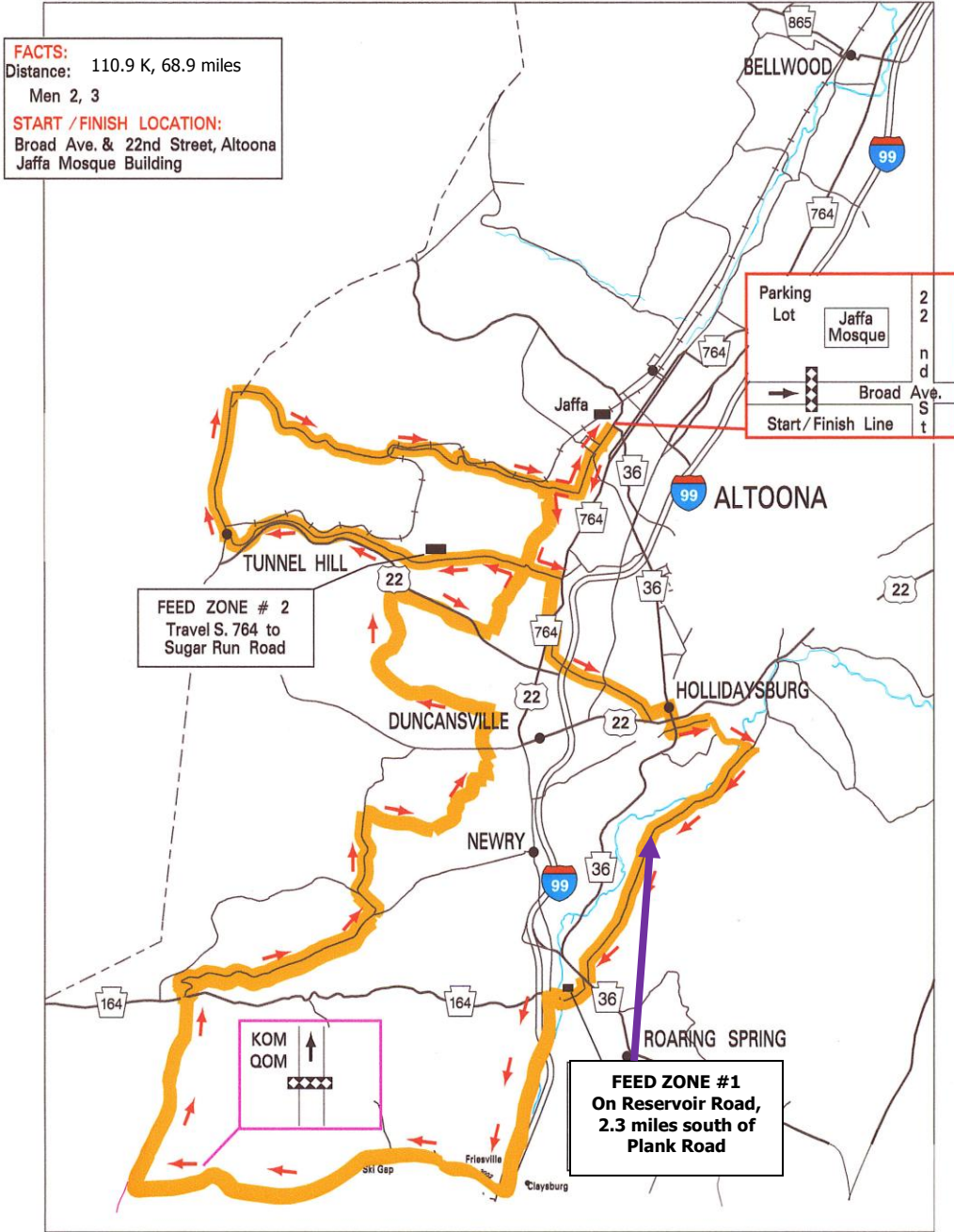
## ALTOONA / BLAIR COUNTY ROAD RACE

### Day 1 Notes

Saturday July 9

- START / FINISH:** From the Holiday Inn Express, travel south on Pleasant Valley Boulevard (right out of parking lot) to Frankstown Road. Turn right and follow PA 36 North to 22<sup>nd</sup> Street. Turn left, travel two blocks. Jaffa Shrine Center is on left.
- PARKING:** All parking will be at the Jaffa Shrine Center.
- FACILITIES:** Portable toilet facilities will be located near the start line. Changing facilities and permanent restrooms will be available at Jaffa Shrine Center.
- TIME:**
- |                 |         |
|-----------------|---------|
| Men Pro 1-2     | 8:00 AM |
| Women Pro 1-2-3 | 8:10 AM |
| Men 2           | 9:40 AM |
| Men 3           | 9:50 AM |
| Men 4/5         | 1:30 PM |
| Women 3/4       | 1:40 PM |
- DISTANCE:** Men 2, Men 3 – 110.9 K or 68.9 miles (map shows incorrect mileage)  
Men 4/5 and Women 3/4 – 32.7 K or 20.3 Miles
- NUMBERS:** Both race numbers and frame number must be placed as shown on page 8 of the race manual. Non-compliance will result in a penalty (rule 4H6a).
- PLACES:** 15 prize places for Men 2, Men 3, Men 4, and Women 3/4  
Only 3 places for Men 5
- KOM & QOM:** All will only have 3 places awarded a prize:
- Men 2 and Men 3 will have one (1) KOM at Blue Knob Mountain
  - Men 4 and Women 3/4 will have KOM / QOM on Sugar Run Road
- STAGING:** Staging is 10 minutes before your start time in the driveway entrance area.
- COURSE:** The challenging and hilly course is open to traffic, while the Peleton is protected by a rolling enclosure.
- Men 2 & 3 course is on pages 12-13
  - Men 4/5 & Women 3/4 is on pages 14-15
- MARKERS:** A conspicuous sign will denote 10 km, 5 km, 1 km and 200 m to the finish.
- VEHICLES:** Only Official, promoter, and support vehicles will be allowed in the Caravan.
- SUPPORT:** There will be neutral support for all participants during race. Categories other than the Stage Race must provide wheels to the wheel vans with the rider number on it.
- FEEDING:** Feed zones for Men 2 and Men 3 will be located on Reservoir Road and Sugar Run Road. There is NO FEEDING for Men 4/5 and Women 3/4.

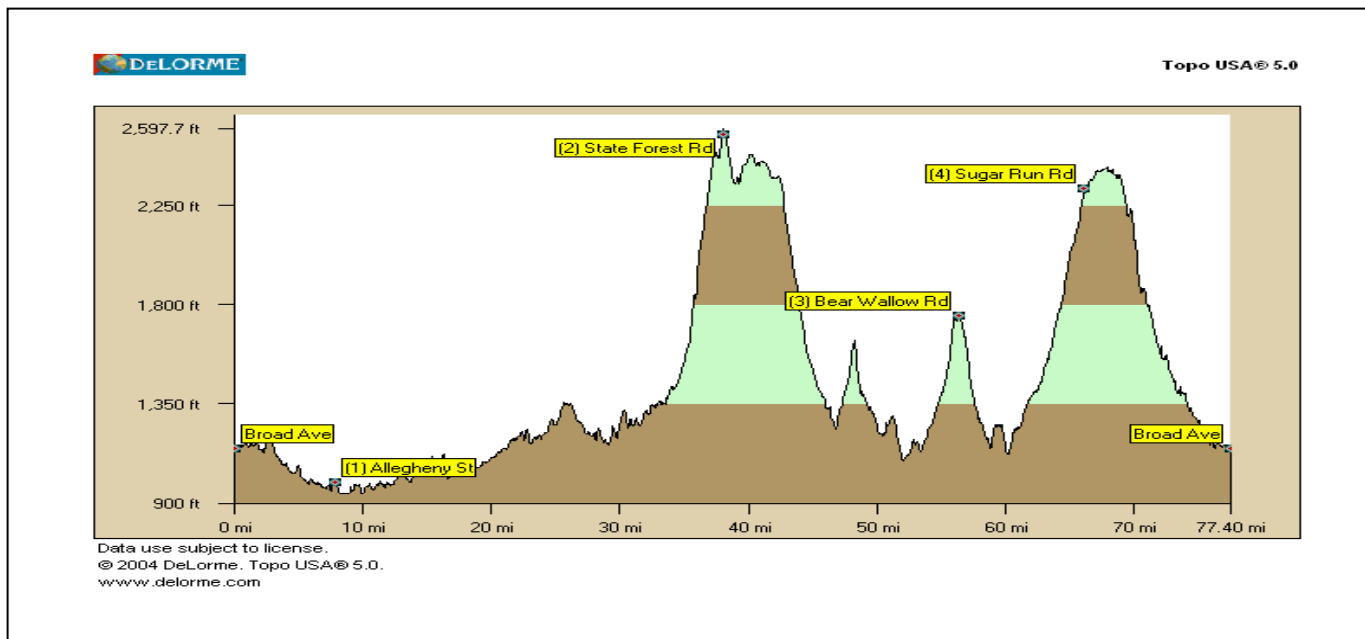
# ALTOONA / BLAIR COUNTY ROAD RACE MEN 2 and MEN 3



## ALTOONA / BLAIR COUNTY ROAD RACE MEN 2 and MEN 3

0.0 **START** - Jaffa Shrine  
 1.3 Right onto 40<sup>th</sup> Street  
 1.4 Left onto Broad Ave (by Allegro Restaurant)  
 1.5 Right onto 48<sup>th</sup> Street  
 3.0 Left onto Oak Avenue  
 3.5 Right onto Burns Avenue  
 4.4 Cross Route 764  
 4.5 Right onto Old 6<sup>th</sup> Avenue Road  
 5.0 Left onto Municipal Drive  
 7.1 Left onto Allegheny Street  
 7.5 Right onto Penn Street  
 7.8 Right at Plank Road Exit  
 8.0 Right onto Plank Road  
 9.8 Right onto Reservoir Road  
 12.1 **FEED ZONE No. 1**  
 15.1 Right onto Route 36  
 15.2 Left onto Freedom Street  
 15.5 Right onto Freedom Street  
 16.1 Left onto County Road 101 / Everett Street  
 20.7 Right onto Church Street  
 22.0 Cross Old Route 220 / Dunnings Highway  
 25.2 Left Overland Pass Road  
 29.3 **KOM / QOM #1** at Chappell Field Sign  
 34.8 Straight at PA 164  
 35.0 **CAUTION - Sharp Right Turn**  
 35.2 **CAUTION - Steep Curving Descent**

39.1 Left onto Poplar Run Road  
 39.6 Right onto Valley Forge Road  
 40.6 **STEEP DESCENT**  
 41.1 Right onto Dry Run Road T-386  
 42.4 Left onto Dry Run Road  
 43.9 Left onto Mill Road  
 44.2 Right onto Foot of Ten Road  
 44.3 Left onto Mill Road  
 44.5 Straight across Rt. 22  
 45.1 Straight at Maple Hollow Road  
 45.2 Left onto Maple Hollow Road  
 48.0 **KOM / QOM #2**  
 48.9 Right onto Carson Valley Road (**WARNING - Steep Descent**)  
 50.9 Left onto Mill Road  
 52.2 Left onto Sugar Run Road  
 54.3 Right side of road **FEED ZONE #2**  
 57.9 **KOM / QOM #3**  
 58.0 Right onto Tunnel Hill Road  
 60.5 Right onto Horseshoe Curve Road  
 61.5 **CAUTION - Steep Curving Descent**  
 63.7 **CAUTION - Single Lane Tunnel**  
 67.4 Left onto Broad Avenue  
 68.9 **FINISH** -Jaffa Shrine Center



**ALTOONA / BLAIR COUNTY ROAD RACE  
MEN 4/5 and WOMEN 3/4**

0.0		Start / Finish Line (Jaffa Shrine)	<b>START</b>
0.8	Bear Right	Broad Ave Ext	
1.5	Right	onto 40 <sup>th</sup> Street	
1.6	Left	onto Oak Avenue	
1.7	Right	onto 48 <sup>th</sup> Street	
1.8	Bear Left	Oak Avenue	
2.7	Cross	58 <sup>th</sup> Street	
3.2	Right	onto Sugar Run Road	
9.1		at graveyard	<b>KOM / QOM</b>
9.1	Right	onto Tunnel Hill Street	
11.7	Right	onto Horseshoe Curve Road	
12.7		<b>STEEP DESCENT</b>	
15.0		Signal light at end of descent!!	
15.1		<b>CAUTION:</b> 1 Lane Tunnel ( <u>watch for oncoming traffic</u> )	
15.3		<b>CAUTION:</b> Narrow 1 Lane – Bridge under Construction	
18.8	Left	onto Broad Avenue	
19.5	Straight	to finish	
20.3		Jaffa Shrine Center	<b>FINISH</b>

**Please Note:**

**There is a wedding late Saturday afternoon at the Jaffa Shrine.  
So, please be considerate to the Bridal Party and vacate the race venue in a reasonably quick manner following  
the race.**

**We would like to be very respectful to the Bride and Groom....thank you!**

**ALTOONA / BLAIR COUNTY ROAD RACE  
MEN 4/5 and WOMEN 3/4**

**FACTS:**

Distance: 32.7 KM, 20.3 Miles

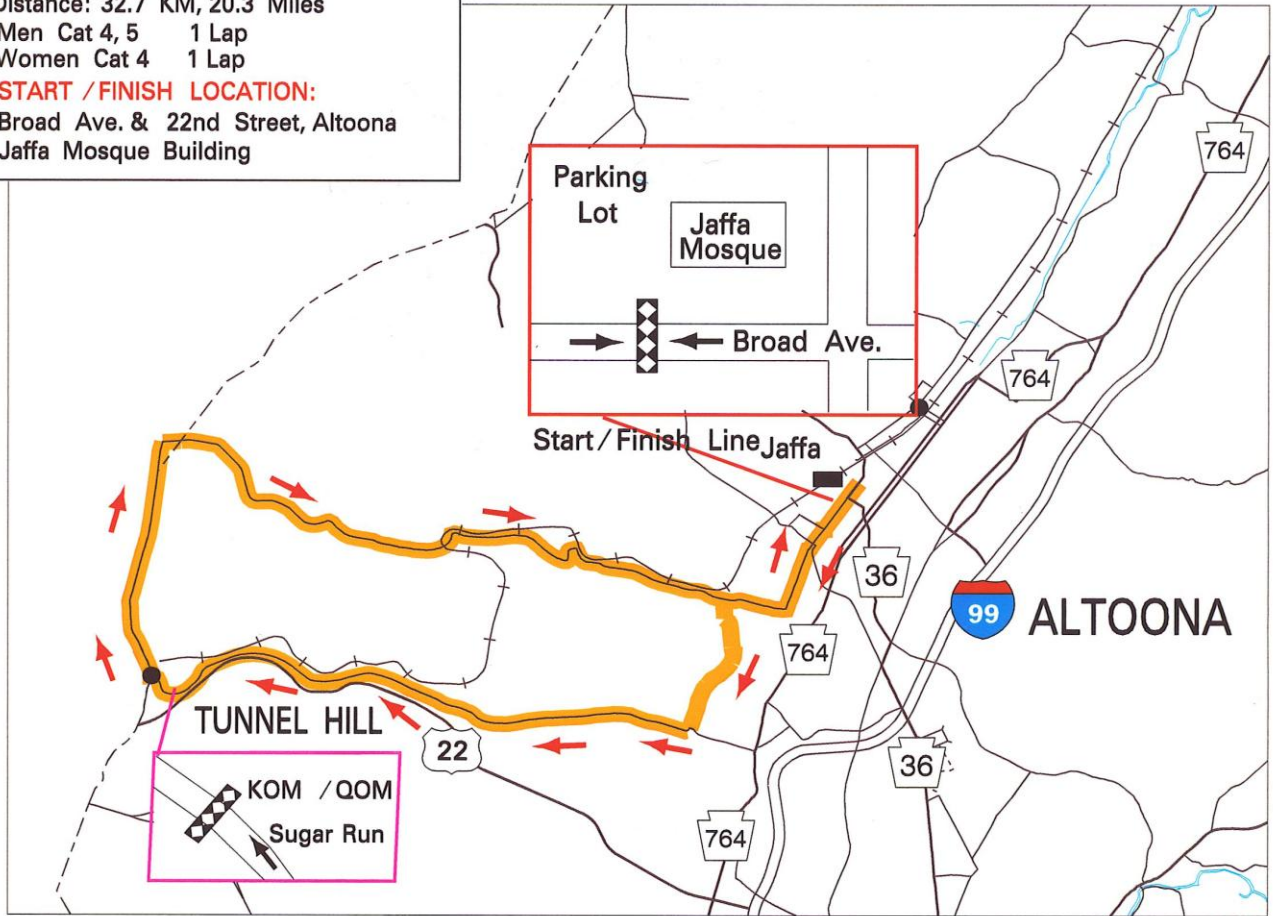
Men Cat 4, 5 1 Lap

Women Cat 4 1 Lap

**START / FINISH LOCATION:**

Broad Ave. & 22nd Street, Altoona

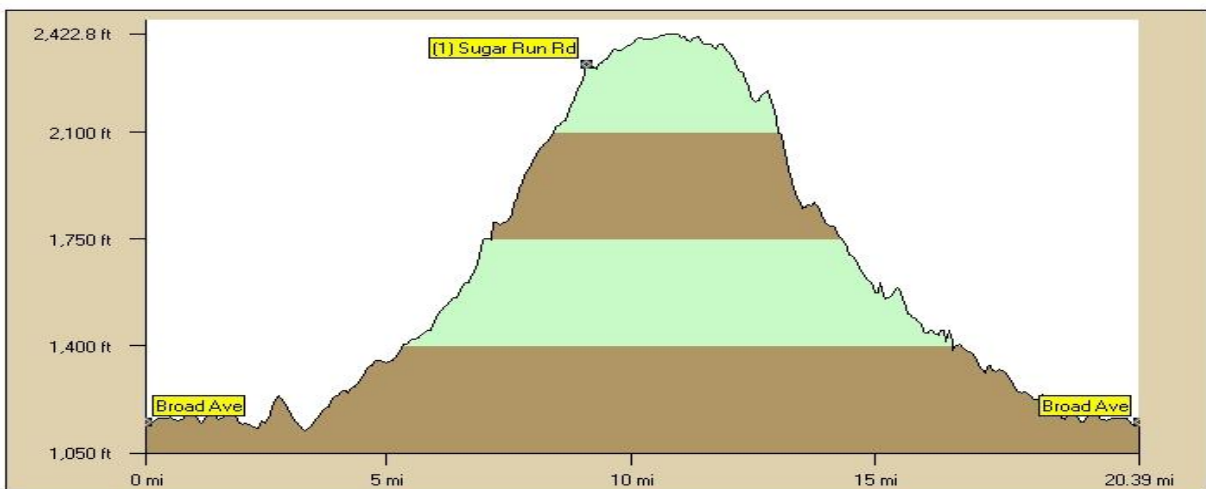
Jaffa Mosque Building



FILENAME:T\_DE\_TOONA.DR, MAP 29



Topo USA® 5.0



Data use subject to license.  
© 2004 DeLorme, Topo USA® 5.0.  
www.delorme.com

**ATLANTIC BROADBAND & ROOT SPORTS  
DOWNTOWN ALTOONA CRITERIUM  
Day 2 Notes  
Sunday July 10**

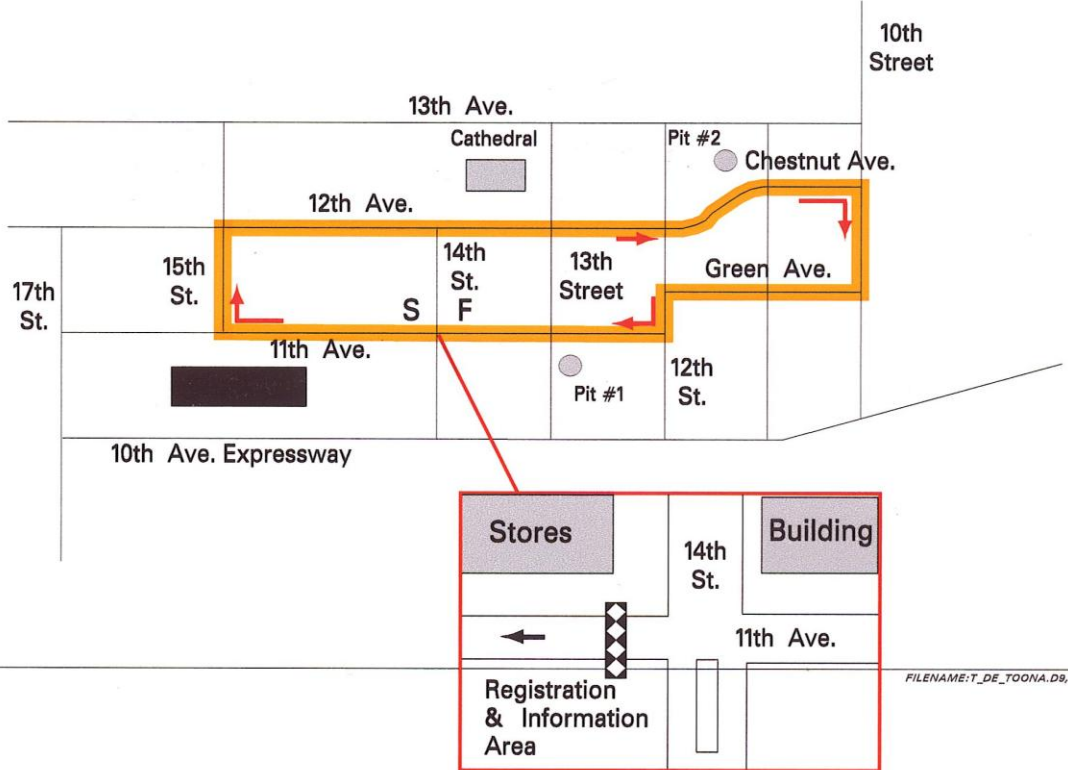
- START / FINISH:** From the Holiday Inn Express, travel north on Pleasant Valley Boulevard to 17<sup>th</sup> Street. Turn left to take 17<sup>th</sup> Street to downtown Altoona. Turn right on to 11<sup>th</sup> Avenue go 1 block and follow parking signs
- PARKING:** Will be available at several surface lots and the Transportation Center Parking Garage.
- FACILITIES:** Portable toilets will be located at Start / Finish line. Changing facilities will be available at the Transportation Center on 11<sup>th</sup> Avenue and 13<sup>th</sup> Street.
- TIME:** First race is at 9:00 AM. All others will follow at the conclusion of the previous race.

<u>ORDER</u>	<u>DISTANCE</u>	<u>START TIME (approx.)</u>
Men 4	20 laps	9:00 AM
Men 3	20 laps	9:50 AM
Women 3 / 4	20 laps	10:40 AM
Men 2	25 laps	11:30 AM
	<b>** BREAK **</b>	<u>12:30 PM</u>
<b>Men Pro 1-2</b>	<b>30 laps</b>	<b>12:40 PM</b>
<b>Women Pro 1-2-3</b>	<b>30 laps</b>	<b>1:50 PM</b>
Men 5	7 laps	3:10 PM

- NUMBERS:** Both race numbers and frame number must be placed as shown on page 8 of the race manual. Non-compliance will result in a penalty (rule 4H6a).
- PLACES:** 12 prize places – Men 2, Men 3, Men 4, and Women 3/4  
3 prize places – Men 5
- STAGING:** All riders must report to the staging area prior to the start of your race.
- COURSE:** A one mile lap with six right turns and two left turns, all 90 degrees. The course includes one slight rise and one moderate descent.
- SUPPORT:** There will be two neutral support pits.
- FREE LAP RULE:** Will be in effect until five (5) laps to go in the race.
- FEEDING:** None

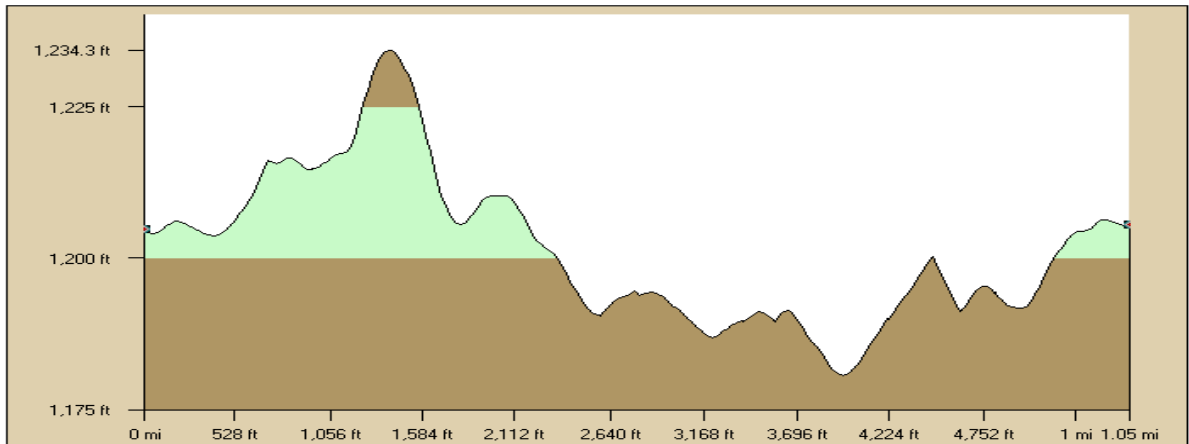
## ATLANTIC BROADBAND & ROOT SPORTS DOWNTOWN ALTOONA CRITERIUM

**FACTS:**  
 Distance: 1.2 KM, 1 Miles Loop  
**START / FINISH LOCATION:**  
 11th Avenue & 14th Street  
 Downtown Altoona



DeLORME

Topo USA® 5.0



Data use subject to license.  
 © 2004 DeLorme, Topo USA® 5.0.  
 www.delorme.com

## HOSPITALS

### Bon Secours Campus Altoona Regional Health System

949-4180

2500 7<sup>th</sup> Avenue, Altoona

Travel North on Broad Avenue Road race site. At signal light turn left onto PA 36. Stay on PA 36 South (Union Avenue). At second signal light, turn left onto 7<sup>th</sup> Avenue. Hospital is on the right. (Road Race)

From downtown Altoona (site of Criterium): Travel South on 17<sup>th</sup> Street to 7<sup>th</sup> Avenue. Turn right, travel to second signal light. Hospital is on the right. Emergency entrance is on 8<sup>th</sup> Avenue & 27<sup>th</sup> Street.

### Altoona Hospital

946-2153

620 Howard Avenue, Altoona

From downtown Altoona (site of Criterium): Travel 12<sup>th</sup> Avenue (one way street) stay left onto Chestnut Avenue. Turn left onto 7<sup>th</sup> Street. Hospital is directly ahead. Emergency entrance is on Howard Avenue.

### Nason Hospital

224-2141 or 695-4140

Roaring Spring

Travel PA 36 South through McKee to Roaring Spring. Continue through first signal light. Hospital entrance is on the left just beyond Spring Plaza and Bickel's Surplus Store. Follow signs to Emergency entrance. (Martinsburg Circuit Race or Point Race)

## Prize Payment Procedure

The 2011 TOUR de 'TOONA Prize Money will be paid NO SOONER than 90 days following the event and after receiving the official race results of any medical testing. All tax forms can be obtained at registration or the registration page of the website [www.tourdetoona.com](http://www.tourdetoona.com).

- No prize money can be paid unless you provide the following current information:
  1. Social Security or Tax ID Number - Please provide the proper IRS Form when registering for Team or riders.
  2. Exact name of payee to receive payment
  3. Mailing Address
- Any prize winner who has incurred charges, non-paid race entry fees, etc. will have the amount deducted from your prize check:

## Riders, Sponsors, & Volunteers Reception

The 2011 Saturday Night Reception will be held at the **Railroaders Museum** beginning at 6:00 pm for participants, sponsors, and race volunteers.

## Local Bicycle Shops

- Pedal Power                      2501 Union Avenue, Altoona                      814-942-4537
- Spoke-N-Skis                      315 Logan Boulevard, Lakemont, Altoona                      814-941-3888

## 2011 Points Race Prize List

Men Cat 2, Men Cat 3, Men Cat 4, Women Cat 3, and Women Cat 4

### Day 1 - Altoona / Blair County Road Race

Place/Pts	Women Cat 3	Women Cat 4	Men Cat 2	Men Cat 3	Men Cat 4	
1 <sup>st</sup> / 25 pts	\$ 375	\$ 292	\$ 500	\$ 375	\$ 292	
2 <sup>nd</sup> / 20 pts	\$ 189	\$ 147	\$ 250	\$ 189	\$ 147	
3 <sup>rd</sup> / 16 pts	\$ 125	\$ 98	\$ 167	\$ 125	\$ 98	
4 <sup>th</sup> / 14 pts	\$ 95	\$ 73	\$ 125	\$ 95	\$ 73	
5 <sup>th</sup> / 12 pts	\$ 75	\$ 58	\$ 100	\$ 75	\$ 58	
6 <sup>th</sup> / 10 pts	\$ 63	\$ 50	\$ 86	\$ 63	\$ 50	
7 <sup>th</sup> / 9 pts	\$ 55	\$ 42	\$ 73	\$ 55	\$ 42	
8 <sup>th</sup> / 8 pts	\$ 48	\$ 37	\$ 63	\$ 48	\$ 37	
9 <sup>th</sup> / 7 pts	\$ 42	\$ 33	\$ 56	\$ 42	\$ 33	
10 <sup>th</sup> / 6 pts	\$ 39	\$ 30	\$ 50	\$ 39	\$ 30	
11 <sup>th</sup> / 5 pts	\$ 35	\$ 27	\$ 46	\$ 35	\$ 27	
12 <sup>th</sup> / 4 pts	\$ 32	\$ 25	\$ 42	\$ 32	\$ 25	
13 <sup>th</sup> / 3 pts	\$ 30	\$ 24	\$ 39	\$ 30	\$ 24	
14 <sup>th</sup> / 2 pts	\$ 29	\$ 22	\$ 37	\$ 29	\$ 22	
15 <sup>th</sup> / 1 pt	\$ 25	\$ 20	\$ 33	\$ 25	\$ 20	
<b>Totals</b>	<b>\$ 1,257</b>	<b>\$ 978</b>	<b>\$ 1,667</b>	<b>\$ 1,257</b>	<b>\$ 978</b>	<b>\$ 6,137</b>

### Day 2 - Altoona Criterium

Place/Pts	Women Cat 3	Women Cat 4	Men Cat 2	Men Cat 3	Men Cat 4	
1 <sup>st</sup> / 14 pts	\$ 250	\$ 183	\$ 350	\$ 250	\$ 183	
2 <sup>nd</sup> / 12 pts	\$ 125	\$ 92	\$ 175	\$ 125	\$ 92	
3 <sup>rd</sup> / 10 pts	\$ 84	\$ 62	\$ 117	\$ 84	\$ 62	
4 <sup>th</sup> / 9 pts	\$ 63	\$ 47	\$ 96	\$ 63	\$ 47	
5 <sup>th</sup> / 8 pts	\$ 50	\$ 37	\$ 75	\$ 50	\$ 37	
6 <sup>th</sup> / 7 pts	\$ 43	\$ 31	\$ 62	\$ 43	\$ 31	
7 <sup>th</sup> / 6 pts	\$ 36	\$ 26	\$ 50	\$ 36	\$ 26	
8 <sup>th</sup> / 5 pts	\$ 32	\$ 23	\$ 45	\$ 32	\$ 23	
9 <sup>th</sup> / 4 pts	\$ 28	\$ 21	\$ 41	\$ 28	\$ 21	
10 <sup>th</sup> / 3 pts	\$ 25	\$ 19	\$ 35	\$ 25	\$ 19	
11 <sup>th</sup> / 2 pts	\$ 23	\$ 17	\$ 33	\$ 23	\$ 17	
12 <sup>th</sup> / 1 pt	\$ 21	\$ 16	\$ 31	\$ 21	\$ 16	
<b>Totals</b>	<b>\$ 780</b>	<b>\$ 574</b>	<b>\$ 1,110</b>	<b>\$ 780</b>	<b>\$ 574</b>	<b>\$ 3,818</b>

Place	QOM Cat 3	QOM Cat 4	KOM Cat 2	KOM Cat 3	KOM Cat 4	
1	\$ 140	\$ 120	\$ 175	\$ 140	\$ 120	
2	\$ 70	\$ 60	\$ 88	\$ 70	\$ 60	
3	\$ 47	\$ 40	\$ 59	\$ 47	\$ 40	
<b>Totals</b>	<b>\$ 257</b>	<b>\$ 220</b>	<b>\$ 322</b>	<b>\$ 257</b>	<b>\$ 220</b>	<b>\$1,276</b>

**General Classification Prize List**

<b>Place</b>	<b>Women Cat 3</b>	<b>Women Cat 4</b>	<b>Men Cat 2</b>	<b>Men Cat 3</b>	<b>Men Cat 4</b>	
1	\$ 575	\$ 300	\$ 800	\$ 575	\$ 300	
2	\$ 288	\$ 150	\$ 400	\$ 288	\$ 150	
3	\$ 192	\$ 100	\$ 267	\$ 192	\$ 100	
4	\$ 144	\$ 75	\$ 200	\$ 144	\$ 75	
5	\$ 116	\$ 60	\$ 160	\$ 116	\$ 60	
6	\$ 97	\$ 50	\$ 134	\$ 97	\$ 50	
7	\$ 84	\$ 43	\$ 115	\$ 84	\$ 43	
8	\$ 73	\$ 38	\$ 100	\$ 73	\$ 38	
9	\$ 65	\$ 35	\$ 89	\$ 65	\$ 35	
10	\$ 59	\$ 31	\$ 80	\$ 59	\$ 31	
11	\$ 54	\$ 29	\$ 73	\$ 54	\$ 29	
12	\$ 49	\$ 26	\$ 67	\$ 49	\$ 26	
13	\$ 46	\$ 25	\$ 62	\$ 45	\$ 25	
14	\$ 43	\$ 23	\$ 58	\$ 43	\$ 23	
15	\$ 40	\$ 21	\$ 54	\$ 40	\$ 21	
16	\$ 37	\$ 20	\$ 50	\$ 37	\$ 20	
17	\$ 35	\$ 19	\$ 48	\$ 35	\$ 19	
18	\$ 33	\$ 18	\$ 45	\$ 33	\$ 18	
19	\$ 32	\$ 17	\$ 43	\$ 32	\$ 17	
20	\$ 30	\$ 16	\$ 40	\$ 30	\$ 16	
<b>Totals</b>	<b>\$ 2,092</b>	<b>\$ 1,096</b>	<b>\$ 2,885</b>	<b>\$ 2,092</b>	<b>\$ 1,096</b>	<b>\$9,261</b>

**Total Prize Purse**

	<b>Women Cat 3</b>	<b>Women Cat 4</b>	<b>Men Cat 2</b>	<b>Men Cat 3</b>	<b>Men Cat 4</b>
<b>Day 1</b>	\$ 1257	\$ 978	\$ 1667	\$ 1257	\$ 978
<b>Day 2</b>	\$ 780	\$ 574	\$ 1110	\$ 780	\$ 574
<b>Gen. Class</b>	\$ 2,092	\$ 1,096	\$ 2,885	\$ 2,092	\$ 1,096
<b>QOM</b>	\$ 257	\$ 220			
<b>KOM</b>			\$ 322	\$ 257	\$ 220
=====					
<b>Totals</b>	<b>\$ 4,386</b>	<b>\$ 2,868</b>	<b>\$ 5,984</b>	<b>\$ 4,386</b>	<b>\$ 2,868</b>

**Total Cash \$ 20,492**

**MEN CAT 5 (Citizens)  
Saturday & Sunday**

<b><u>Place</u></b>	
1	Medal
2	Medal
3	Medal